

ODD-EYE

Game changer of Mammography

KOREA NUCLEAR ENGINEERING CO.

1. Pink Ribbon

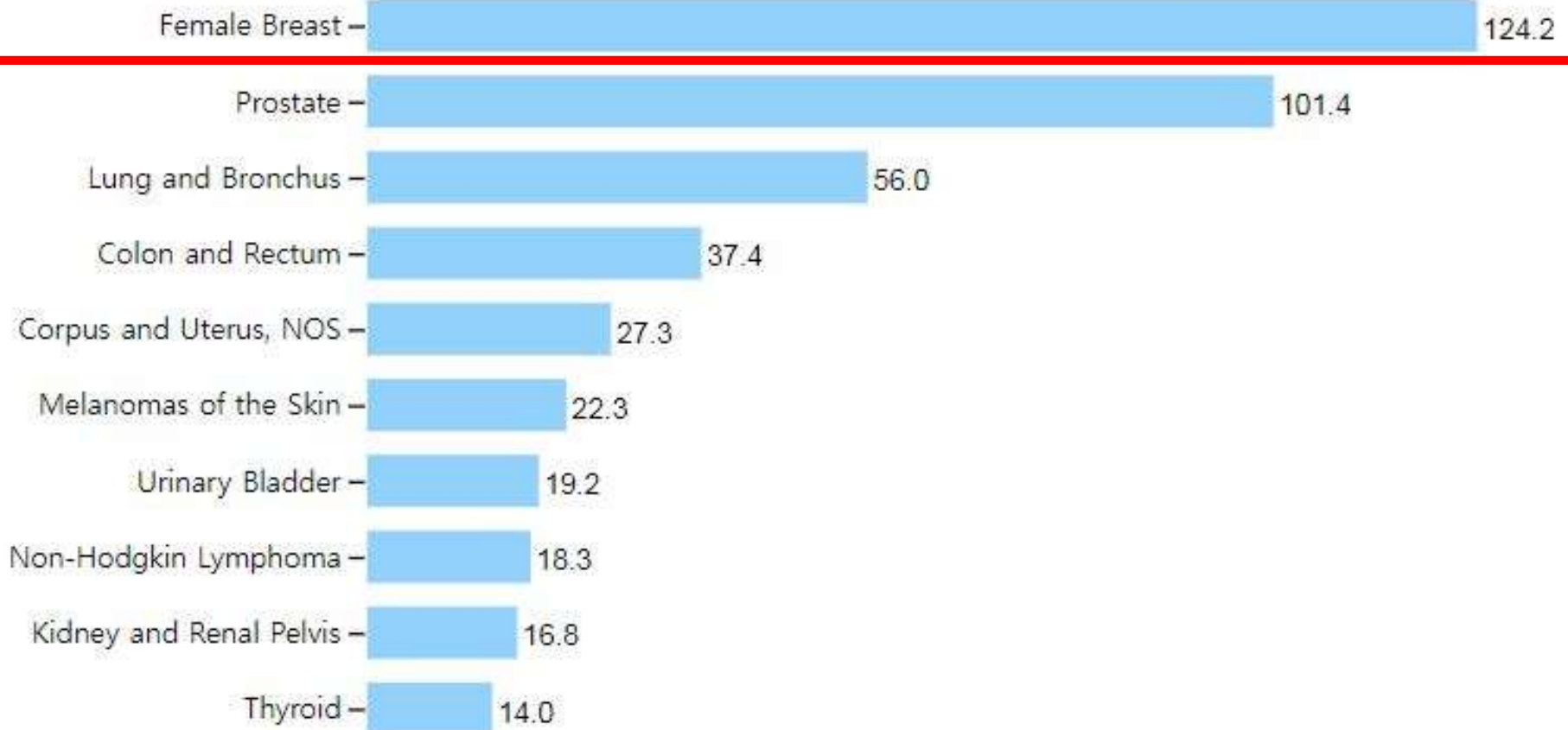


2. Mammography



3. Statistics of breast cancer

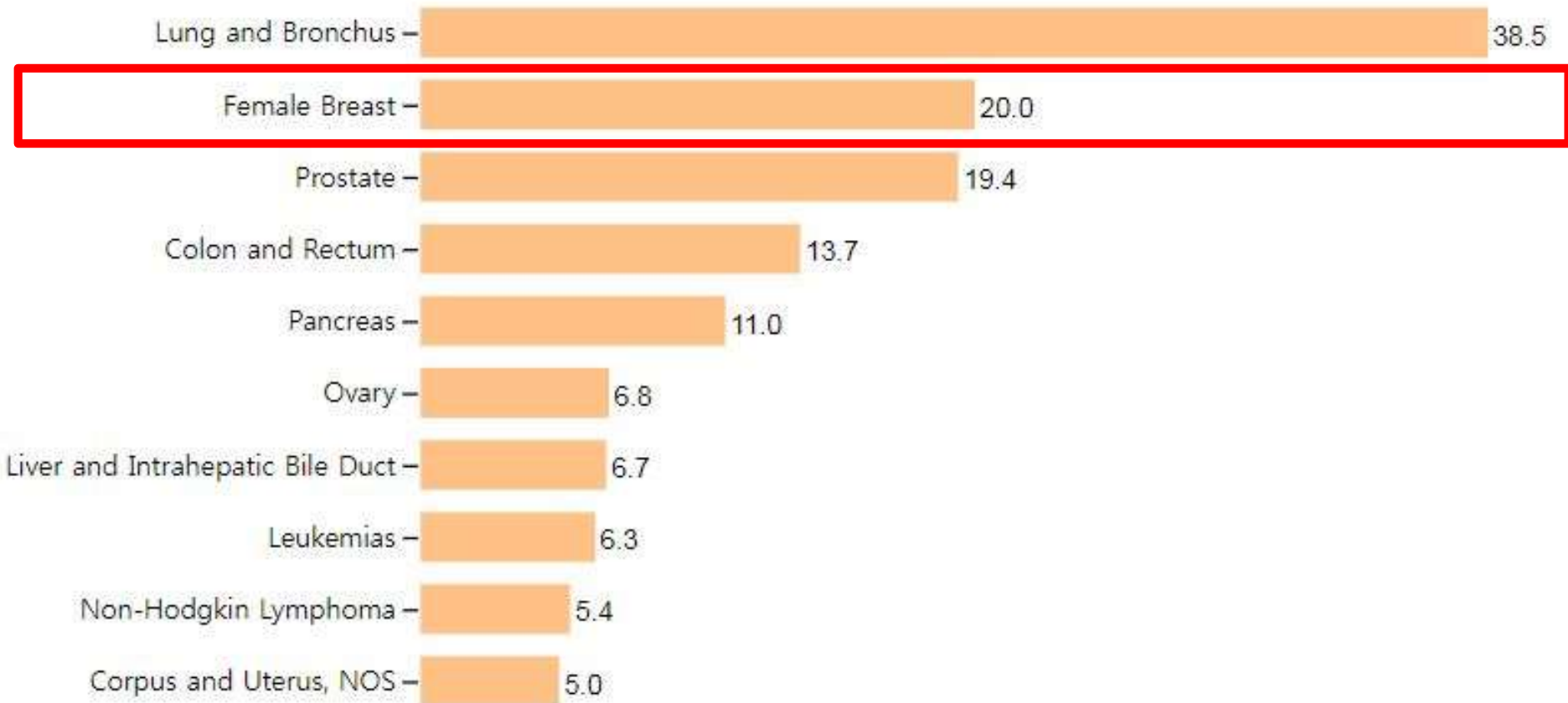
➤ Top 10 Cancers by Rates of New Cancers Cases



United States, 2016, Female
Rate per 100,000 women

3. Statistics of breast cancer

➤ Top 10 Cancers by Rates of Cancer Deaths



United States, 2016, Female
Rate per 100,000 women

4. Major Companies



HOLOGIC Selenia Dimensions



GE Senographe Pristina

4. Major Companies

SIEMENS
Healthineers



Siemens MAMMOMAT Inspiration

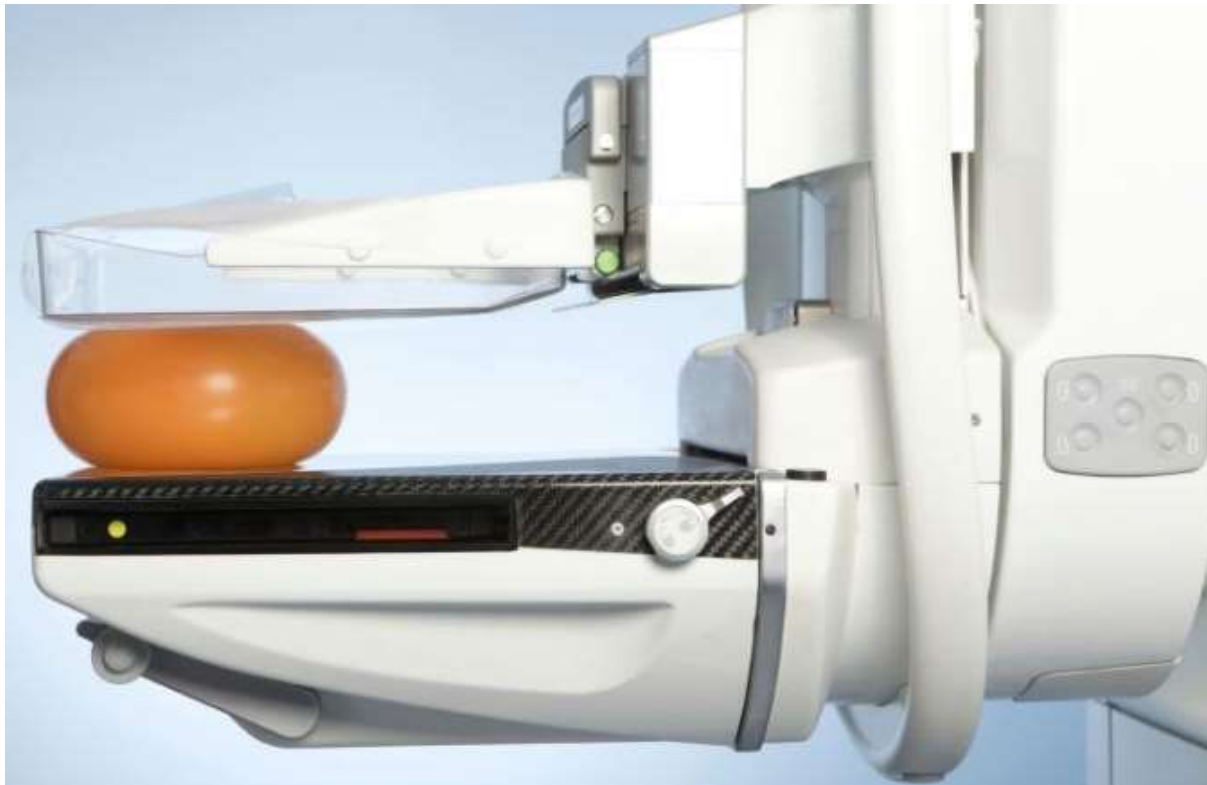
MEDI-FUTURE
The Global Leader in Women's Healthcare.



Medi-Future SOUL Direct

5. Disadvantaged of existing products

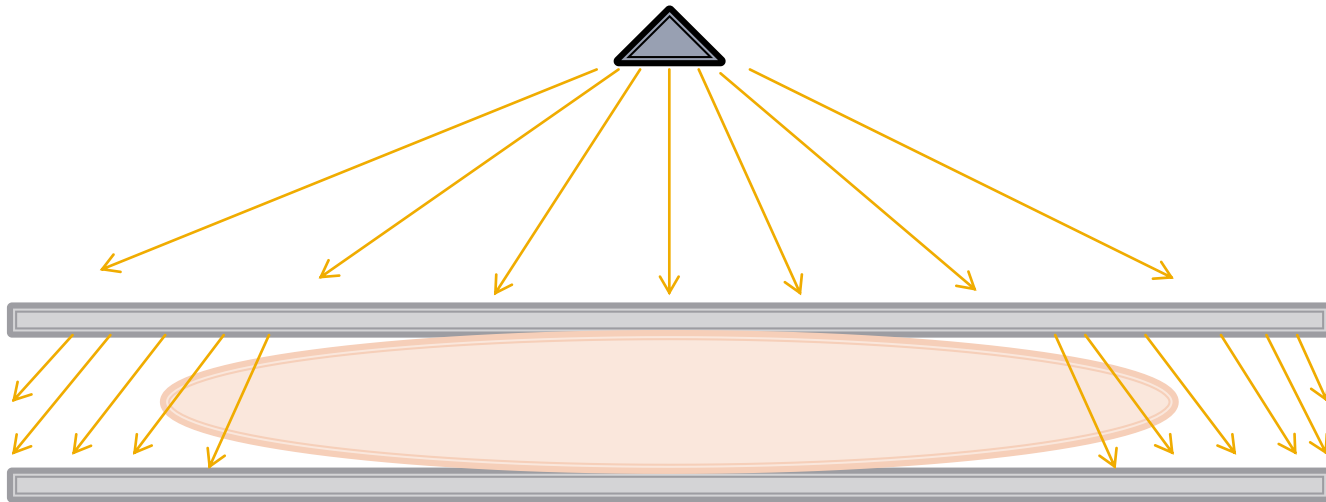
- Pain by compression paddle
 - Women hate pain during mammography.



5. Disadvantaged of existing products

➤ Whitening phenomenon

- Because the chest is spherical, the amount of X-ray passing through is different, causing bleach.
- Increasing exposure with multiple shots.

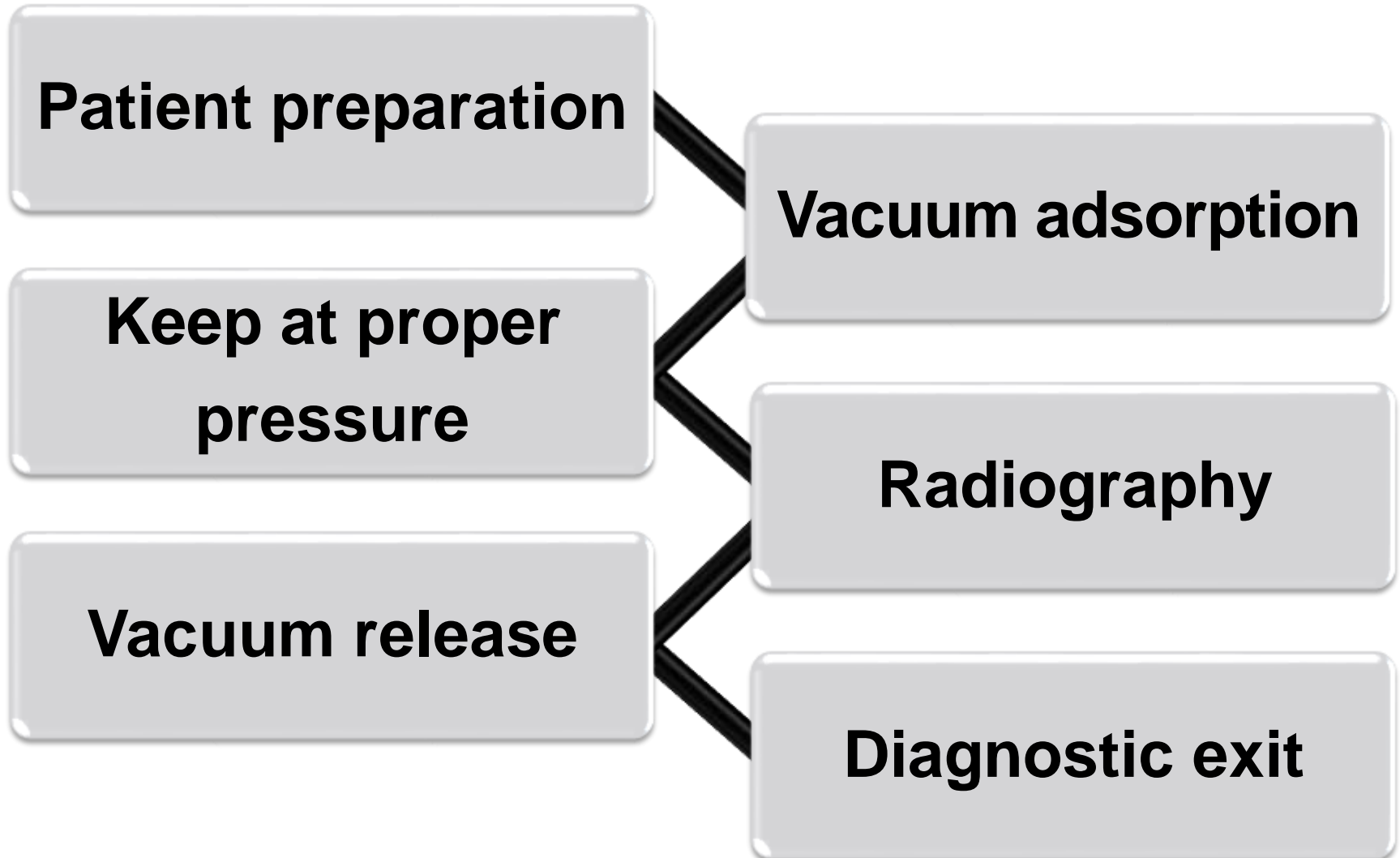


6. Solution is ODD-EYE



Patents Pending

7. Process of ODD-EYE



8. Two birds, one stone.

Vaccum absorption of ODD-EYE

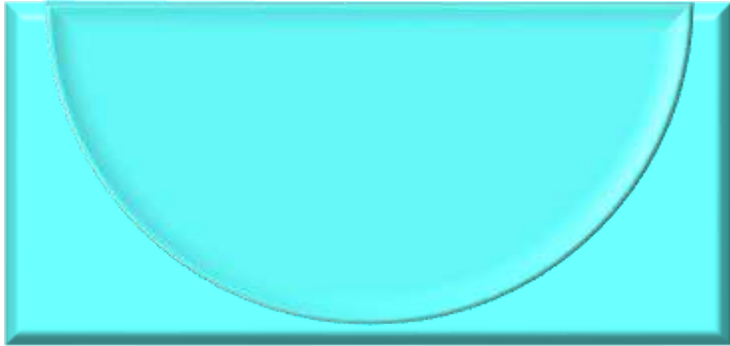


Decreasing of pain

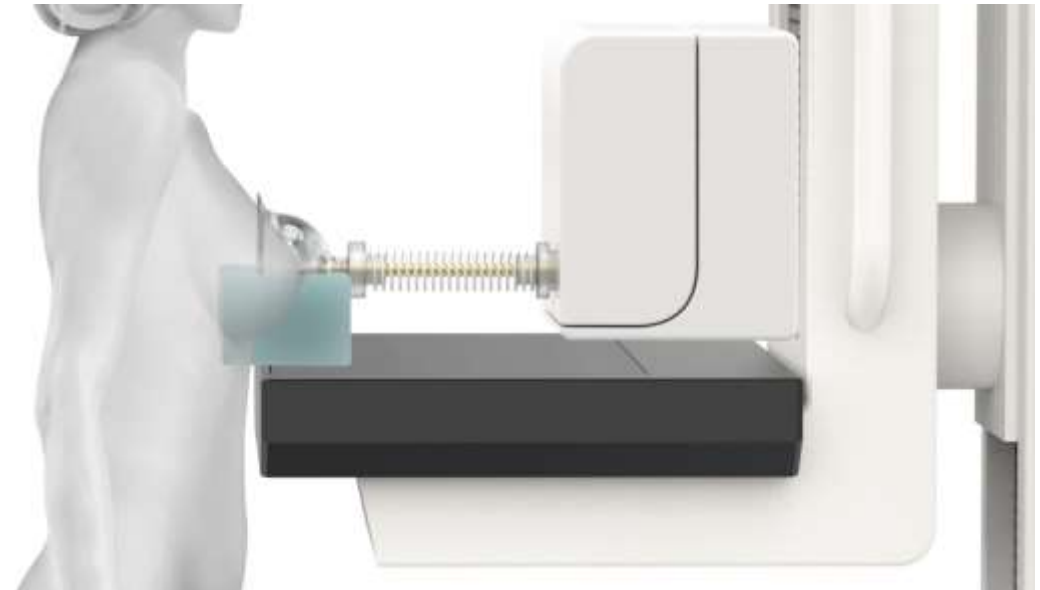
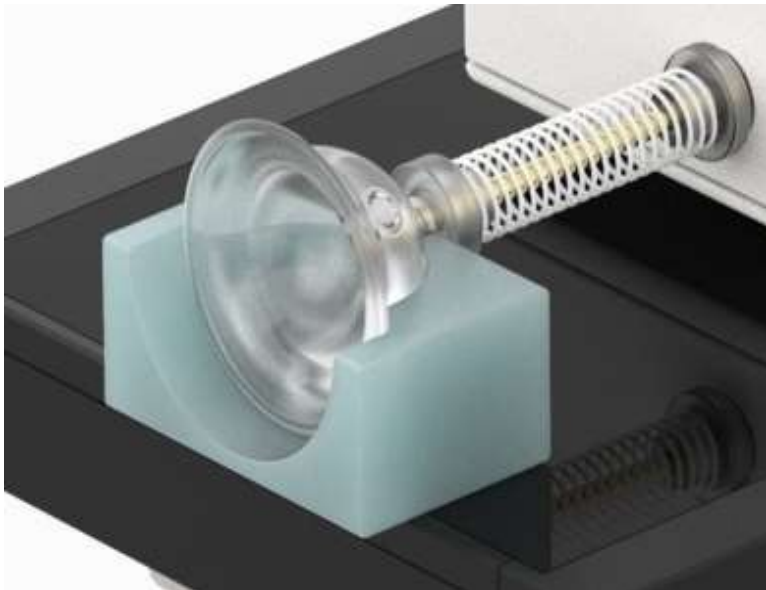


**Reduce X-ray exposure
for diagnosis**

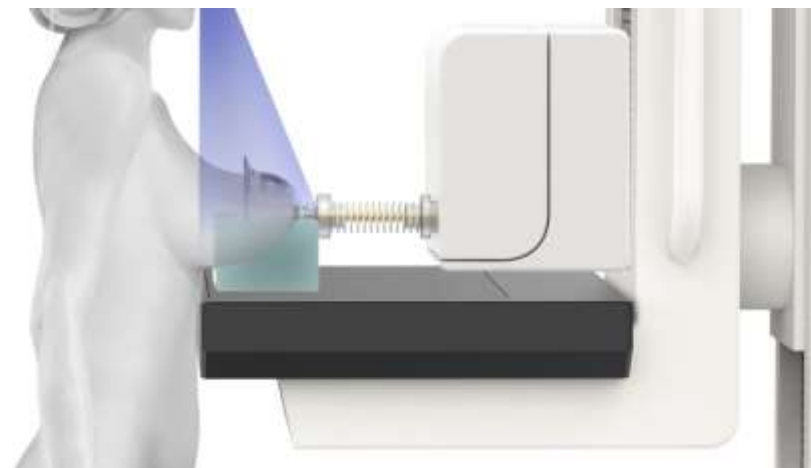
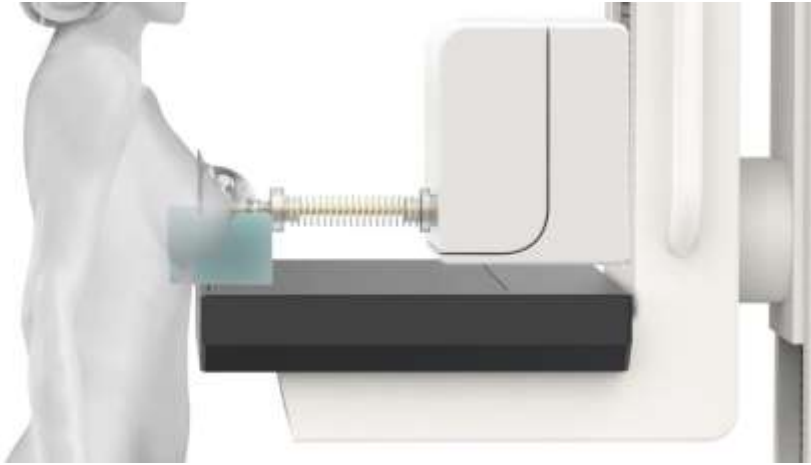
9. Whitening prevention supplement



- **Adjusting the passage of X-rays for easy reading.**



10. Optimizing of X-ray passage



**Bleach
compensater**



One time shooting

11. Low exposure

- One time exposure will be enough for diagnosis.

Average glandular dose of patient per radiograph

Device	Number of shots needed	Average glandular dose
ODD-EYE	1 shot	1.16 mGy
Others	2 shot	2.32 mGy

12. Running time shortening



Simple preparation



Time saving

13. Strong points of ODD-EYE

Vaccum absorption technology from ODD-EYE

No pain

**Bleach
compensater**

Low exposure

**Running time
shortening**



**Comfy breast
screening experience**

Win

Win

**Easy and Fast
diagnosis**



Thanks.